

PNAV: Unable to Open Text File Error

If you are getting the following error message:

Unable to open header test file C:\Program Files\WayptGPS\PNAV_C_Decimal.txt

Or

Unable to open header test file C:\Program Files\WayptGPS\PNAV_C_DMS.txt

Or the one like Figure 1.

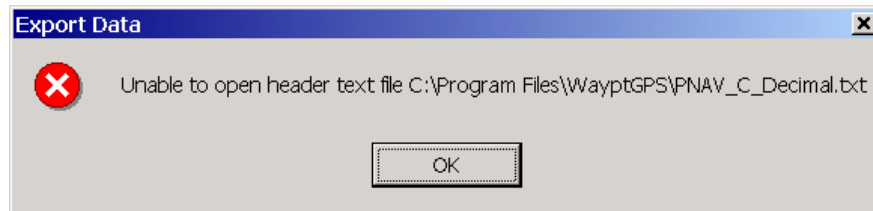


Figure 1. "Unable to open header text file" error

One of the following two methods should solve the problem:

Method 1: Change the Header/Footer path in Export Wizard

- 1) Go to 'Export Wizard'
 - a) Select the 'PNAV C-File' profile that is giving you the error.
 - b) Click 'Modify'

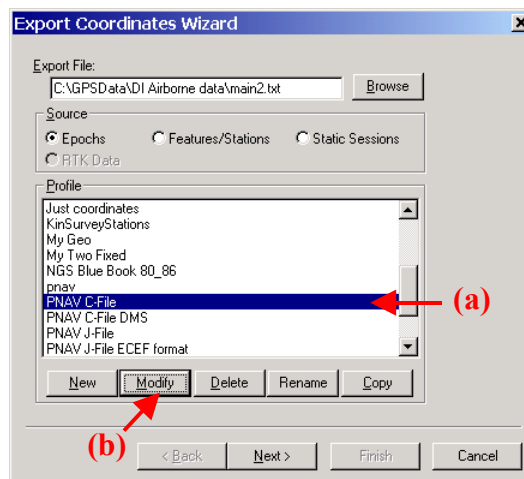


Figure 2. Export Wizard

2) You will come to the following screen:

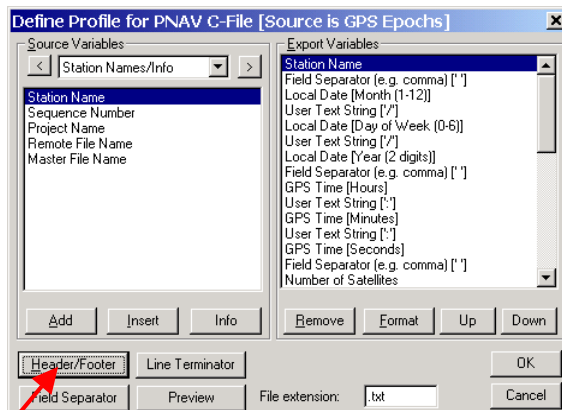


Figure 3. Export Wizard (Modify)

Click on 'Header/Footer', you will then see the following:

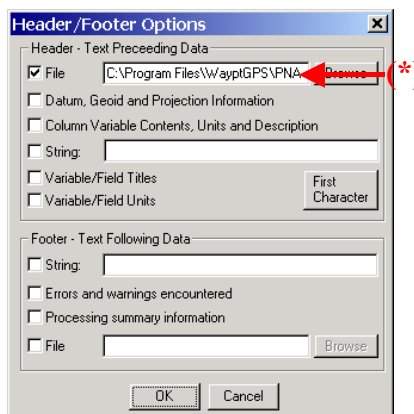


Figure 4. Header/Footer Options

Change the path (*) to the following:

- If this is the 'PNAV C-File' profile, change the path to:
*C:\Program Files\WayptGPS603?*PNAV_C_Decimal.txt**
where ? is the version alphabet ('a' or 'b').
- If this is the 'PNAV C-File DMS' profile, change the path to:
*C:\Program Files\WayptGPS603?*PNAV_C_Decimal.txt**
where ? is the version alphabet ('a' or 'b').

Click OK, the profile should now work, if not go to Method 2.

NOTE: The path may differ depending on where GrafNav/GrafNet is installed.

Method 2: Copy Files

Along with this document there should be two files:

- PNAV_C_DMS.txt
- PNAV_C_Decimal.txt

These are the two header files that are missing from the directory where the software is installed. The path should be:

C:\Program Files\WayptGPS603?

where ? is the version alphabet ('a' or 'b').

You might have to run Method 1 next.

NOTE: The path may differ depending on where GrafNav/GrafNet is installed.